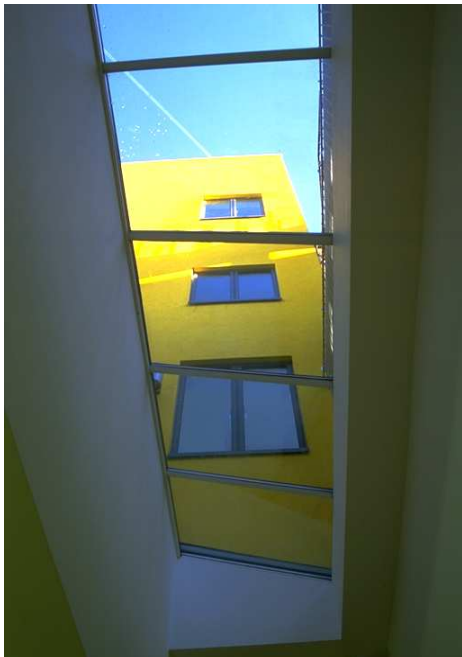


6-8 Kingly Court

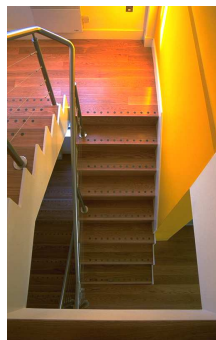
London

Client	Shaftesbury Carnaby Ltd
Area	10,000sqft
Building Type	Office



Located at the southern end of Carnaby Street, the development carried out for Shaftesbury plc consists of two buildings of distinctly differing architectural styles linked by a new structure erected in what was an open well between the two buildings. The ground and basement levels consist of a large retail unit with frontages on Carnaby Street and Kingly Court. This encourages the movement of pedestrians between the revitalised shopping environment that has been created in the Carnaby area as a whole.

Interior fittings and finishes were chosen to bridge the gap between the industrial aesthetic of the Victorian building in Kingly Court and the utilitarian 1960's design of the office building fronting onto Carnaby Street. Services installations were designed to suit the different spaces with exposed ductwork and suspended fluorescent light fittings in the lofty Kingly Court offices and concealed services and recessed lighting in the lower areas of the Carnaby Street building.



6-8 Kingly Court