

The Bourne

London

Client	Common Group
Area	6000sqft
Building Type	Residential

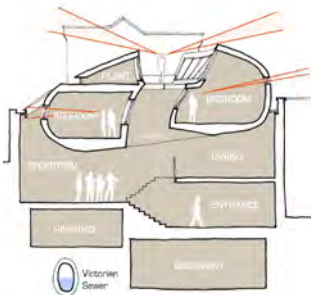


The site lies within an enclosed location at the heart of Marylebone within the City of Westminster. That it has remained undeveloped for so long is unusual given its excellent location in Central London.

We were approached by our client to design a high quality, single family residential property of a contemporary nature. The site is surrounded on four sides by 6.5m high boundary walls so achieving effective natural light levels was always going to be a challenge.

The design solution was to create a floating 'pod' which houses the bedroom suites and is pulled back from the edges of the site to allow natural light to filter down into the living spaces on the lower floors.

The project has received planning approval and construction is anticipated to commence in 2008



The Bourne