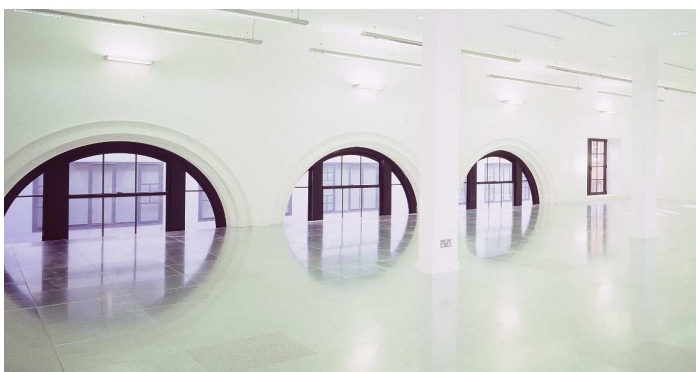


Merc House

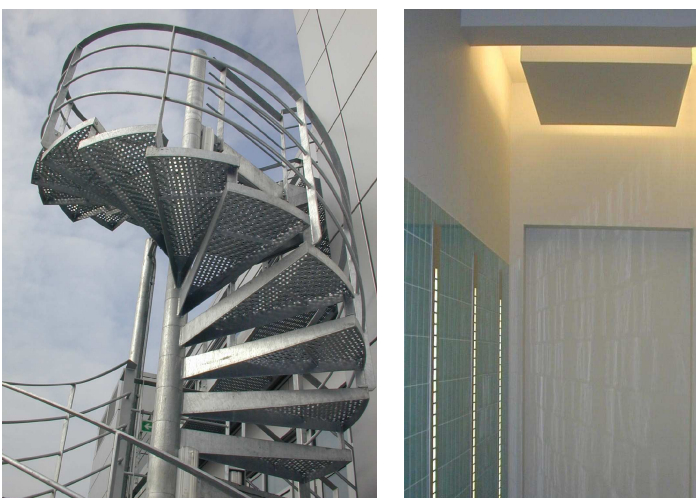
London

Client	Shaftesbury Carnaby Ltd
Area	6,500 sqft
Building Type	Office



This striking brick building in the centre of Carnaby was originally built as a fur warehouse, with limited window openings and highly insulated solid brick walls.

The upper floors of the building were converted into highly individual office spaces, with differing qualities of space, light and proportions. The thick walls on the south side of the building were demolished and replaced with aluminium cladding and window system with external galleries overlooking the newly complete Kingly Court retail development.



Merc House